



St. Mary's Catholic High School, Dubai – Muhaisnah

# POSITIVE DISCIPLINE and BEHAVIOUR MANAGEMENT POLICY

Written by:	<b>HOKS &amp; Sr. Alma</b>	Reviewed:	<b>September 2019</b>
Endorsed by:	<b>SLT</b>	Next Review:	<b>September 2020</b>
Approved by:	<b>Board of Governors</b>		



## Positive Discipline and Behaviour Management Policy

### POLICY STATEMENT

SMM aims to promote positive discipline and behaviour throughout the School by encouraging students to take responsibility for their behaviour and to support others to behave appropriately. We are committed to maintaining an atmosphere and environment where students feel secure, happy and motivated to learn, and where there is a sense of belonging and mutual respect. Encouragement and praise are vital in helping students develop a positive self-image. Guided by the Core Values of respect, honesty, excellence, and compassion, students may adopt positive attitudes towards School, studies, peers and authority. The School will acknowledge those who meet these standards. However, when students fail to meet these standards, proper disciplinary measures will be applied and students will be given clear guidelines and expectations for improvement.

### POLICY OBJECTIVES

1. To reward and praise children for their positive behaviour e.g. thank you for walking in the corridor, well done for staying on task and working quietly, etc.
2. To offer the children a challenging curriculum, stimulating environment and an orderly routine.
3. To have high expectations of the students so that they give of their best, value themselves and what they do.
4. To promote consideration and respect for others.
5. To ensure the emotional and physical safety of everyone in the school.
6. To promote pride in the school environment.
7. To promote positive behaviour and to deal with unacceptable behaviour immediately.
8. To recognize and act upon any incidences of bullying immediately.
9. To be consistent and fair and to give the students positive recognition and reinforcement whenever possible, such as merit award and star of the week award.
10. To value the diversity of our school community and to meet the needs of our students.
11. To promote home-school partnership through circulars, note in the copybook, phone calls and notes in the Student Diary.

### EQUAL OPPORTUNITIES

We believe it is the right of all students, regardless of their gender ethnicity, physical ability, linguistic, cultural or home background, to have access to quality learning experiences in a safe, secure, friendly and supportive environment. We feel it is important for all staff to have a whole-school approach to promoting positive behavior with clear and consistent expectations

### POSITIVE BEHAVIOUR

Positive Behaviour is demonstrated by pupils when:

- They spontaneously follow rules and routines and match realistic teacher expectations.
- They are motivated to learn and take a full part in school life.
- They value their strengths and attempt to build on them.



- They identify areas for development and work on them with perseverance.
- They exercise autonomy in their behaviour and learning and are able to stop and think before acting.
- They relate positively to others.
- They can express and deal with their feelings appropriately.
- They can talk about their thoughts, feelings, and behavior.

## REWARDS AND POSITIVE STRATEGIES

Consistent application of positive rewards to show acknowledgement, acceptance, or appreciation for the student's good and appropriate behaviour can improve self-esteem and form positive attitudes and behaviour. All members of staff are enjoined to praise students and give them encouragement when possible. Effective praise acknowledges the effort, focuses attention on appropriate behaviour and helps the student appreciate how their achievement is helped by their own attitude.

## SCHOOL RULES

SMM trains students to attain, not only their academic potential but also to become value-oriented, law-abiding and responsible citizens in an ever growing and developing world. The School has established a code of conduct that must be displayed throughout the school in the form of School Rules to which all students are expected to adhere at all times.

Five specific reasons:

1. Personal Safety -- Rules are intended to protect everyone in the SMM community.
2. Peer Consideration – Rules guide students to respect their peers and consider their personal safety too.
3. Respect for Authority -- Following the rules at school shows respect for authority. By obeying the school rules students show the school authority: Staff, SLT, and the Principal, that they trust their decisions, knowing that each rule has a specific purpose.
4. Academic performance – Obeying school rules improve the student's academic standing. Students who stay focused, most likely get a better education.
5. School's standard – Schools have their own standard or principles that govern the behaviour and grooming of their students, staff, and everyone in the school community. These standards make a school different from the others. SMM School Rules and the school uniform make SMM different from other schools. Therefore SMM students are expected to follow the School Rules at all times anywhere on the campus and to wear the school uniform properly when attending school. School Rules are stipulated in the Student Diary; students are expected to bring their Diary to school every day.



The school rules are non-negotiable and are standardised in all areas of the school. Classrooms should follow these simple rules and not add or take away from them.

- Respect --** Treat yourself and others with respect.  
Use equipment and facilities safely and responsibly.
- Honesty --** Be honest and truthful in words and actions at all times.
- Excellence --** Always do your best.
- Compassion --** Be kind and understanding to everyone.

## CLASSROOM MANAGEMENT and the USE OF THE TRAFFIC LIGHTS

Planning the lesson to meet the needs of the students, and getting students engaged in their own learning will ensure high motivation and interest. The aim is to provide a learning environment that is conducive to good behaviour. Effective learning contributes to good behaviour.

Not all students equally respond to this positive learning environment. Every classroom is provided with the Traffic Lights to help teachers manage their class.

At the start of each class, all the names of the students are in the *green light*. The name of the student who misbehaves is moved to the *yellow light*. If after prompting the student adheres, the name is moved back to *green*. However, if the student continues to misbehave his/her name is now moved to *red*. And if after prompting the student does not heed, his/her name and a brief description of his/her behaviour is written in the behaviour log. The class teacher reports the behaviour log to the KS Leader who follows up the students listed in the log for behaviour inquiry, and for further referral, when necessary.

## CONSEQUENCES and SANCTIONS

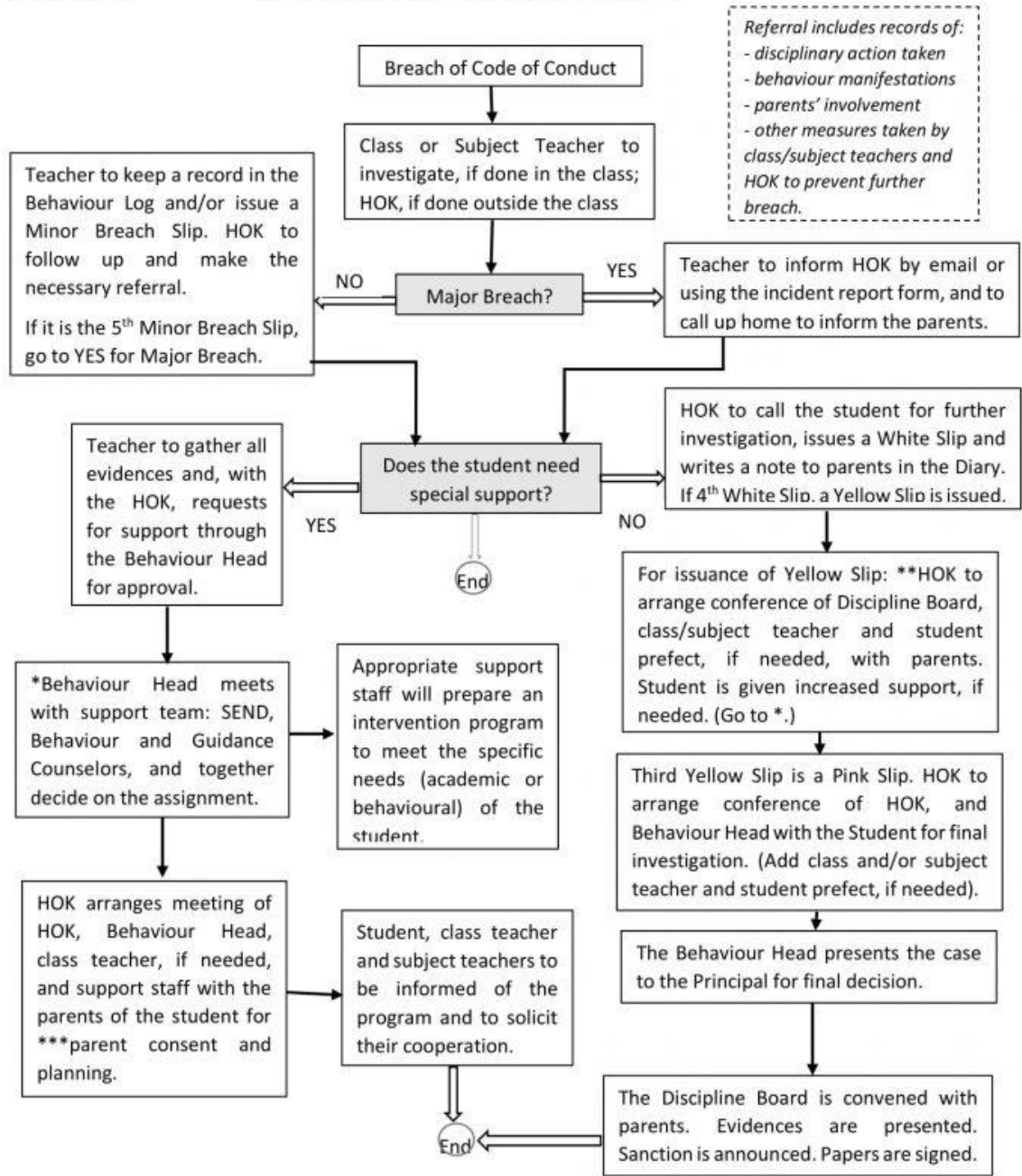
Inappropriate Behaviour or Breach of Code of Conduct	Consequences/Sanctions
Minor offenses such as: Running in the corridor, staying in the corridor in between classes, noisy while walking in the corridor, shouting, chewing gum, incomplete uniform, no homework, etc.	Reprimand Minor Offense Slip
Bullying, disrespect for authority, fighting, discriminating and foul language, out of bounds, bringing cell phones and other gadgets to school without due permission, collection of 5 Minor Offense slips	<b>White Slip</b> and notice to parents in the Diary, or conference with parents, when deemed needed
Physical assault, bringing or possession of forbidden and dangerous materials to school such as cigarettes, knives, hard drinks, prohibited drugs, smoking in campus, stealing,	<b>Yellow Slip</b> , and parents' conference, 3 days suspension and other interventions or proper support (Guidance & counseling,



disrespect for school property that results to damage, vandalism, PDA, rude behaviour that has caused risks on other's or one's wellbeing, etc., collection of 5 white slips	SEND or Behaviour modification counselling)
Collection of 3 Yellow Slips	<b>Pink Slip</b> , Discipline Board is convened with parents, and pieces of evidence to back up the decision/sanction are presented, papers are signed.



FLOW CHART A SMM BEHAVIOUR MANAGEMENT -- WAVE 1



Referral includes records of:  
 - disciplinary action taken  
 - behaviour manifestations  
 - parents' involvement  
 - other measures taken by class/subject teachers and HOK to prevent further breach.

\*\* HOK to refer to student support team for more information.  
 \*\*\* If parent/s do not consent to student support plan, student is treated as mainstream and therefore will be subjected to the rules as such.

Legend:  
 HOK – Head of Key Stage  
 SEND – Special Education Needs & Development  
 Discipline Board – *ad hoc* committee